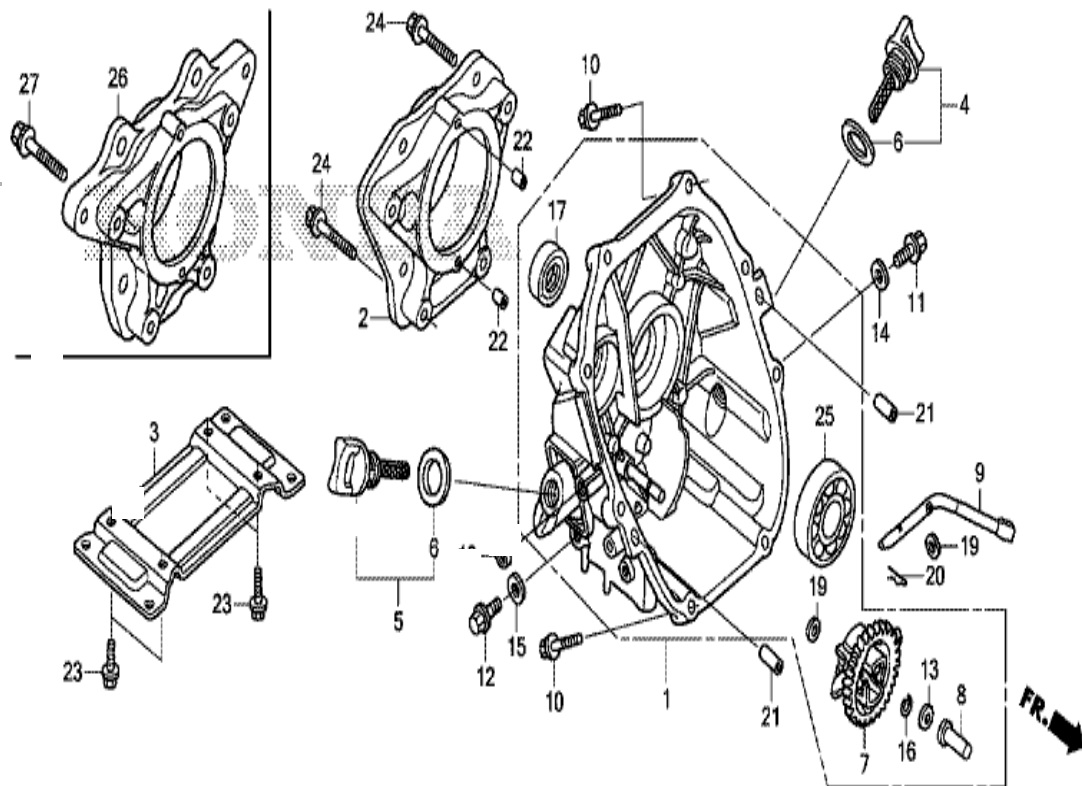


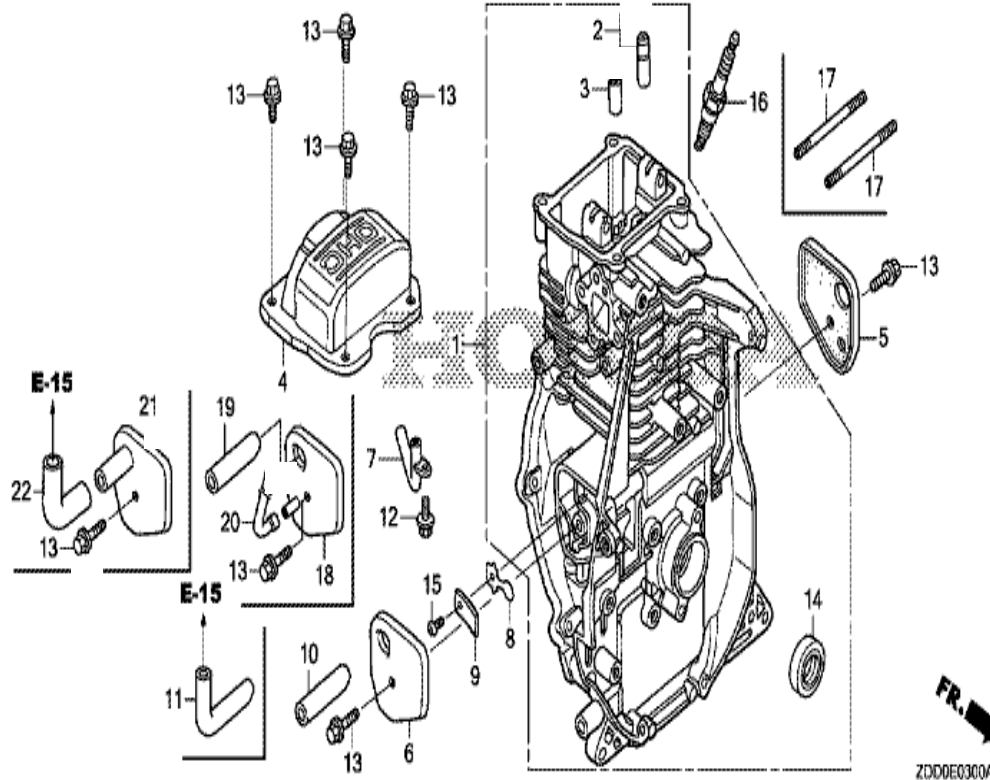
**GX100RT**  
**E-6 CRANKCASE COVER**



Refnr	Part Number	Description	from	to	Unit Qty.	Order Qty.	Repair Qty.
1	11300-Z0D-409	COVER ASSY., CRANKCASE			001	0	0
2	11511-Z0D-V00	FLANGE, P.T.O.			001	0	0
4	15600-ZDF-000	CAP ASSY., OIL FILLER			001	0	0
6	15625-Z0T-800	PACKING, OIL FILLER CAP			001	0	0
7	16510-ZL8-000	GOVERNOR ASSY.			001	0	0
8	16531-ZE1-000	SLIDER, GOVERNOR			001	0	0
9	16541-Z0D-000	SHAFT, GOVERNOR ARM			001	0	0
10	90121-952-000	BOLT, FLANGE, 6X25 (CT200)			008	0	0
11	90131-ZE1-000	BOLT, DRAIN PLUG			001	0	0
13	90451-ZE1-000	WASHER, THRUST, 6MM			001	0	0
14	90601-ZE1-000	WASHER, DRAIN PLUG, 10.2MM			001	0	0
16	90602-ZE1-000	CLIP, GOVERNOR HOLDER			001	0	0
17	91202-KJ9-003	OIL SEAL, 20X32X6			001	0	0
18	91231-891-003	OIL SEAL, 6X11X4 (ARAI)			001	0	0
19	94101-06800	WASHER, PLAIN, 6MM			002	0	0
20	94251-08000	PIN, LOCK, 8MM			001	0	0
21	94301-08200	DOWEL PIN, 8X20			002	0	0
22	94303-06100	DOWEL PIN, 6X10			002	0	0
24	95701-08040-00	BOLT, FLANGE, 8X40			004	0	0
25	96100-62040-00	BEARING, RADIAL BALL, 6204			001	0	0

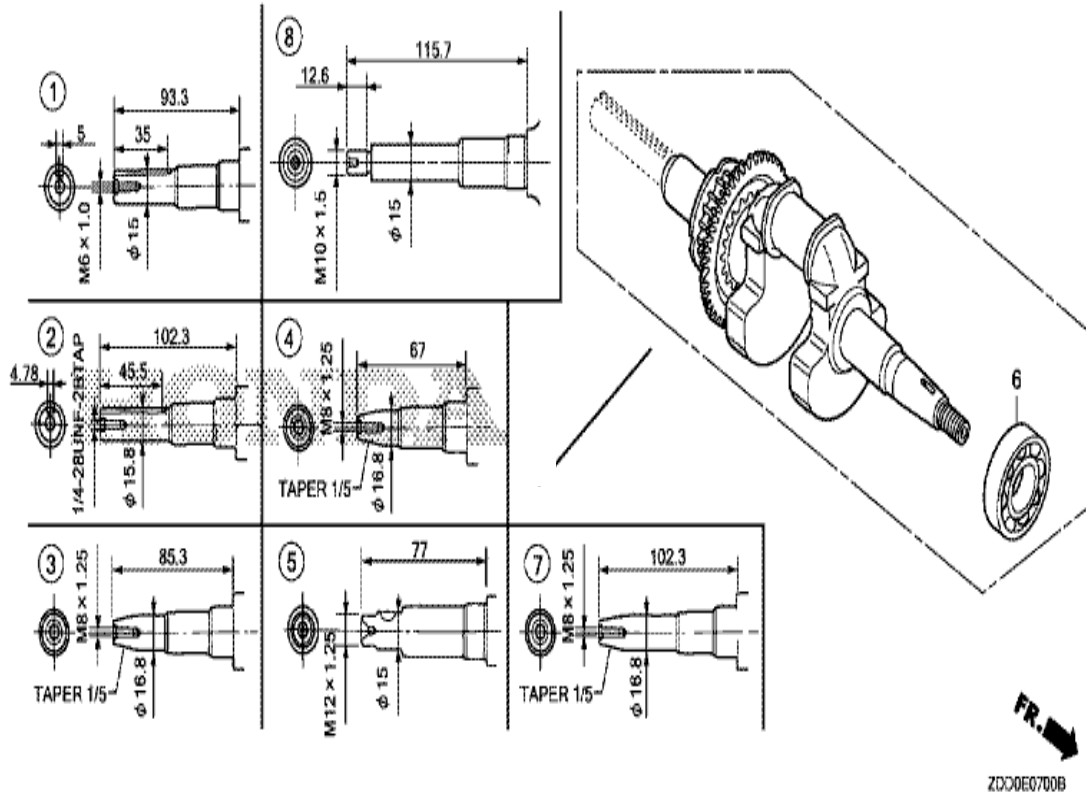
GX100RT

E-3 CYLINDER BARREL



Refnr	Part Number	Description	from	to	Unit Qty.	Order Qty.	Repair Qty.
1	12000-Z0D-405	BARREL ASSY., CYLINDER			001	0	0
4	12311-Z0D-000	COVER, HEAD			001	0	0
5	12355-Z0D-000	COVER COMP. A, BREATHER			001	0	0
6	12365-Z0D-000	COVER COMP. B, BREATHER			001	0	0
7	15171-Z0D-V00	PIPE, BREATHER			001	0	0
8	15571-ZM7-003	VALVE, OIL OUTLET			001	0	0
9	15572-ZM7-000	PLATE, STOPPER			001	0	0
10	15721-Z0D-000	TUBE, BREATHER			001	0	0
12	90008-ZM7-000	BOLT, 4X10			001	0	0
13	90014-952-000	BOLT, FLANGE, 6X14 (CT200)			006	0	0
14	91202-KJ9-003	OIL SEAL, 20X32X6			001	0	0
15	93500-03005-0A	SCREW, PAN, 3X5			001	0	0
16	98056-55757	PLUG, SPARK (U16FSR-UB)			001	0	0
16	98056-55777	PLUG, SPARK (CR5HSB)			001	0	0

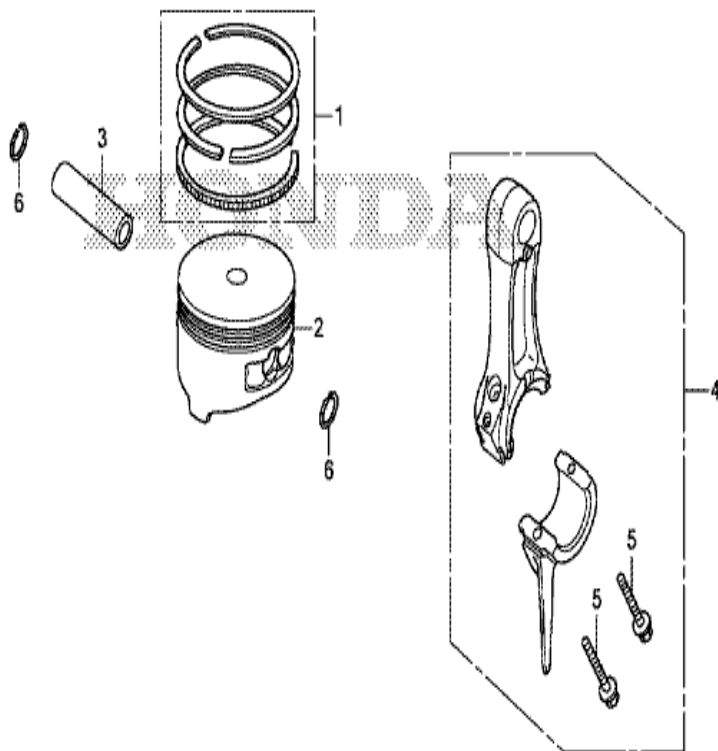
**GX100RT**  
**E-7 CRANKSHAFT**



Refnr	Part Number	Description	from	to	Unit Qty.	Order Qty.	Repair Qty.
5	13310-Z0D-V00	CRANKSHAFT COMP.			001	0	0
6	91001-Z0D-V01	BEARING, RADIAL BALL, 6204C			001	0	0

GX100RT

E-8 PISTON/CONNECTING ROD

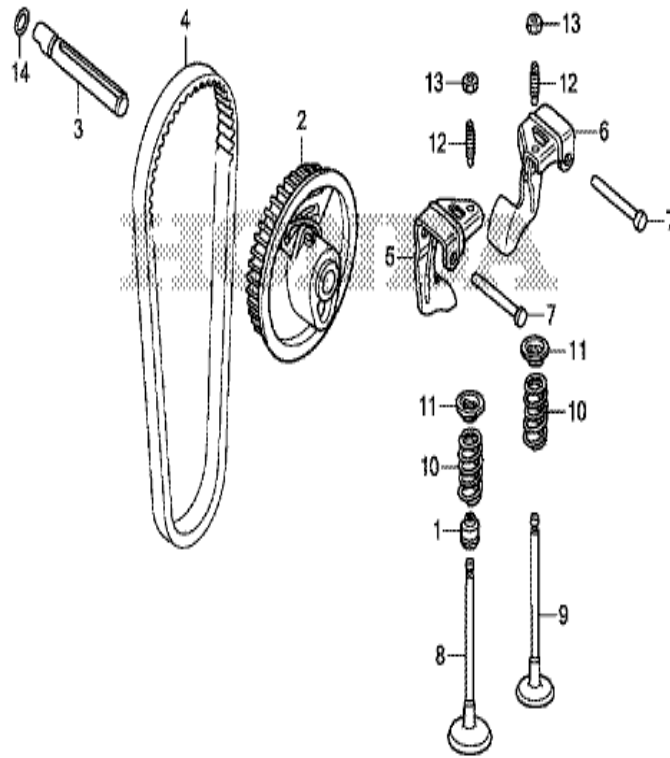


FR. →  
ZDDDE0800

Refnr	Part Number	Description	from	to	Unit Qty.	Order Qty.	Repair Qty.
1	13010-Z0D-003	RING SET, PISTON			001	0	0
2	13101-Z0D-000	PISTON		1142880	001	0	0
2	13101-ZDD-000	PISTON	1142881		001	0	0
3	13111-ZE0-000	PIN, PISTON			001	0	0
4	13200-Z0D-000	ROD ASSY., CONNECTING			001	0	0
5	90001-ZM7-000	BOLT, CONNECTING ROD			002	0	0
6	90551-ZE0-000	CLIP, PISTON PIN, 13MM			002	0	0

GX100RT

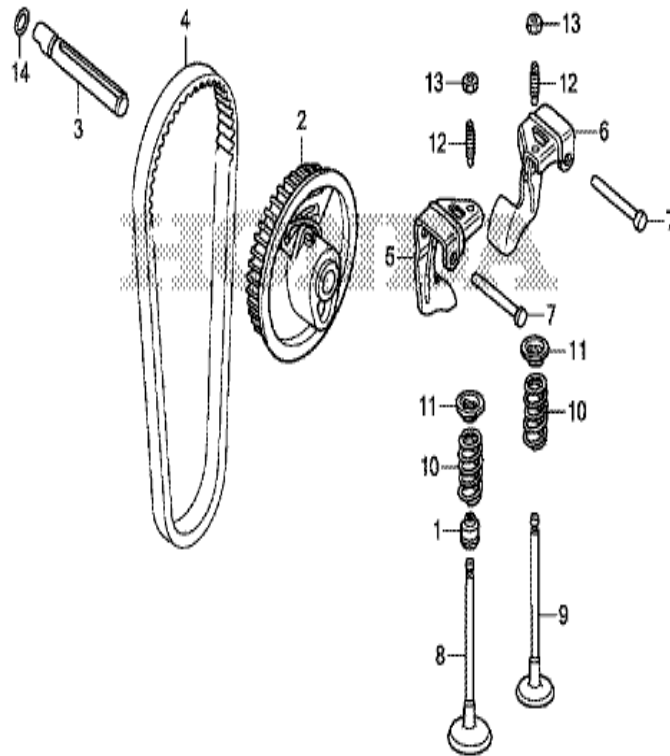
E-9 CAMSHAFT PULLEY



Refnr	Part Number	Description	from	to	Unit Qty.	Order Qty.	Repair Qty.
1	12209-KT7-013	SEAL, VALVE STEM			001	0	0
2	14320-ZDD-000	PULLEY COMP, CAMSHAFT			001	0	0
3	14324-Z0D-000	SHAFT, CAM PULLEY			001	0	0
4	14400-Z0D-003	BELT, TIMING (61YU7 G-200)			001	0	0
5	14431-ZDD-000	ARM, IN. VALVE ROCKER			001	0	0
6	14441-ZDD-000	ARM, EX. VALVE ROCKER			001	0	0
7	14461-ZL8-000	SHAFT, ROCKER ARM			002	0	0
8	14711-Z0D-000	VALVE, IN.			001	0	0
9	14721-Z0D-000	VALVE, EX.			001	0	0
10	14751-Z0D-000	SPRING, VALVE			002	0	0
11	14771-ZDF-000	RETAINER, VALVE SPRING			002	0	0
12	90012-333-000	SCREW, TAPPET ADJUSTING			002	0	0
13	90206-001-000	NUT, TAPPET ADJUSTING			002	0	0
14	91301-ZM0-V31	O-RING, 6.8X1.9 (ARAI)			001	0	0

GX100RT

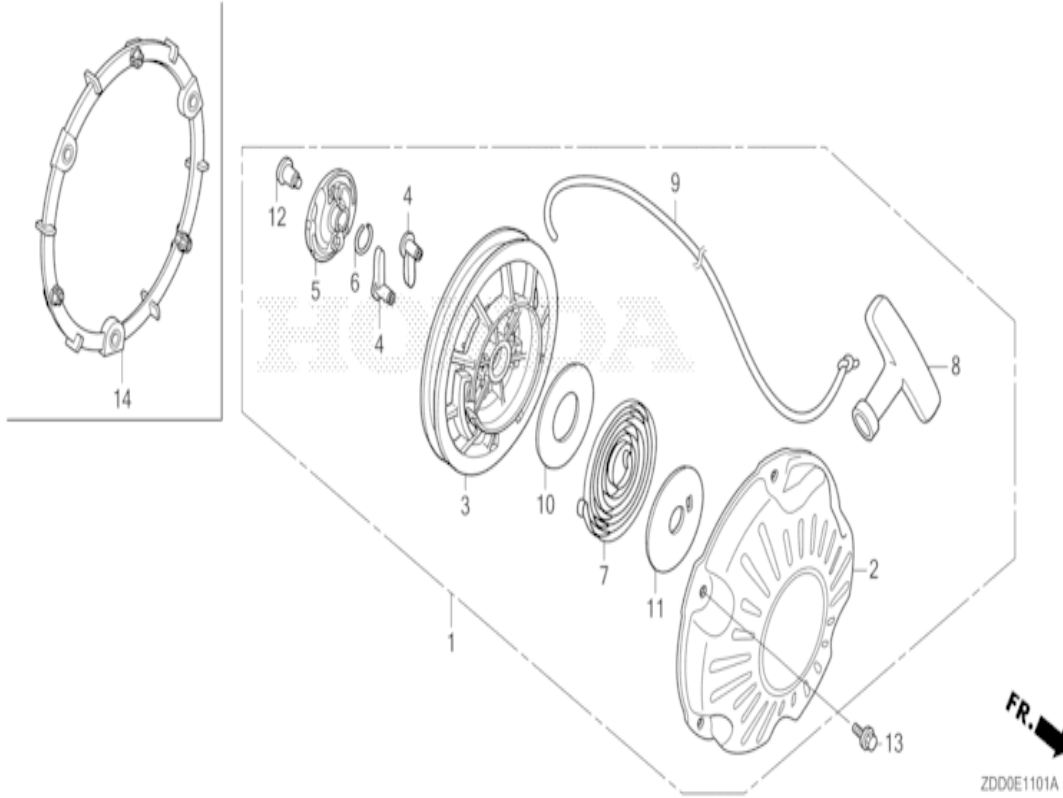
E-9 CAMSHAFT PULLEY



Refnr	Part Number	Description	from	to	Unit Qty.	Order Qty.	Repair Qty.
1	12209-KT7-013	SEAL, VALVE STEM			001	0	0
2	14320-ZDD-000	PULLEY COMP, CAMSHAFT			001	0	0
3	14324-Z0D-000	SHAFT, CAM PULLEY			001	0	0
4	14400-Z0D-003	BELT, TIMING (61YU7 G-200)			001	0	0
5	14431-ZDD-000	ARM, IN. VALVE ROCKER			001	0	0
6	14441-ZDD-000	ARM, EX. VALVE ROCKER			001	0	0
7	14461-ZL8-000	SHAFT, ROCKER ARM			002	0	0
8	14711-Z0D-000	VALVE, IN.			001	0	0
9	14721-Z0D-000	VALVE, EX.			001	0	0
10	14751-Z0D-000	SPRING, VALVE			002	0	0
11	14771-ZDF-000	RETAINER, VALVE SPRING			002	0	0
12	90012-333-000	SCREW, TAPPET ADJUSTING			002	0	0
13	90206-001-000	NUT, TAPPET ADJUSTING			002	0	0
14	91301-ZM0-V31	O-RING, 6.8X1.9 (ARAI)			001	0	0

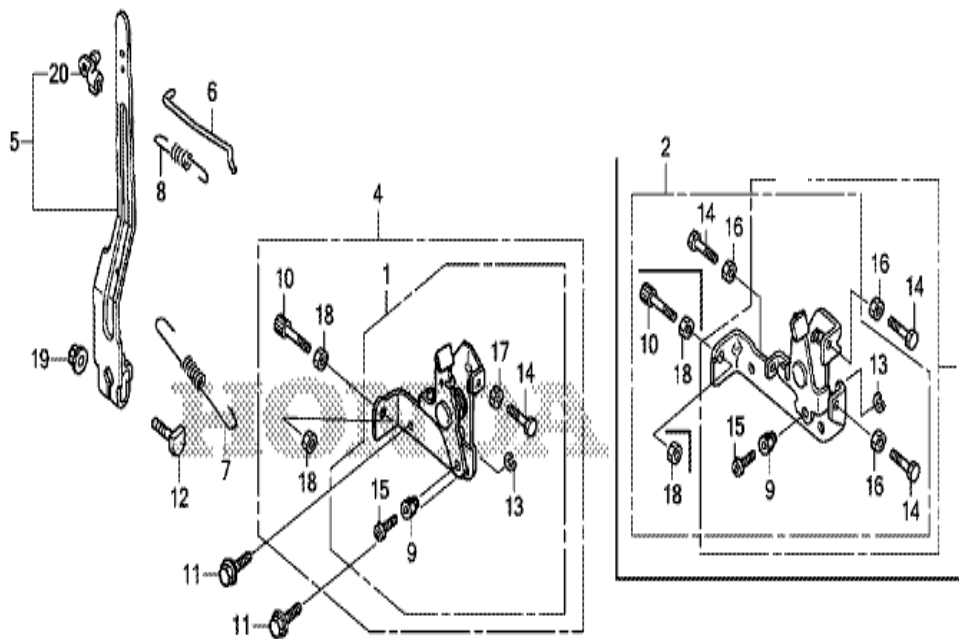
GX100RT

E-11-1 RECOIL STARTER (2)



Refnr	Part Number	Description	from	to	Unit Qty	Order Qty	Repair Qty
1	28400-Z0D-V04ZA	STARTER ASSY., RECOIL *NH1* (NH1 BLACK)			001	0	0
1	28400-Z0D-V04ZC	STARTER ASSY., RECOIL *R280* (R280 POWER RED)			001	0	0
2	28410-Z0D-V02ZA	CASE COMP., RECOIL STARTER *NH1* (NH1 BLACK)			001	0	0
2	28410-Z0D-V02ZC	CASE COMP., RECOIL STARTER *R280 * (R280 POWER RED)			001	0	0
3	28421-Z0D-V02	REEL, RECOIL STARTER		1011611	001	0	0
3	28421-ZDD-003	REEL, RECOIL STARTER (BLACK)	1011612		001	0	0
4	28422-ZG0-W02	RATCHET, STARTER			002	0	0
5	28433-ZG0-W02	GUIDE, RATCHET			001	0	0
6	28441-ZW6-003	SPRING, FRICTION			001	0	0
7	28442-ZH8-003	SPRING, RECOIL STARTER			001	0	0
8	28461-ZDD-003	KNOB, RECOIL STARTER	1011612		001	0	0
8	28461-ZH8-013	KNOB, RECOIL STARTER		1011611	001	0	0
9	28462-Z0D-V03	ROPE, RECOIL STARTER			001	0	0
10	28467-Z0D-V02	PLATE, SIDE			001	0	0
11	28468-Z0D-V02	PLATE, SLIDE			001	0	0
12	90003-ZH8-003	SCREW, SETTING			001	0	0
13	95701-06008-00	BOLT, FLANGE, 6X8			003	0	0

**GX100RT**  
**E-22-1 CONTROL (2)**

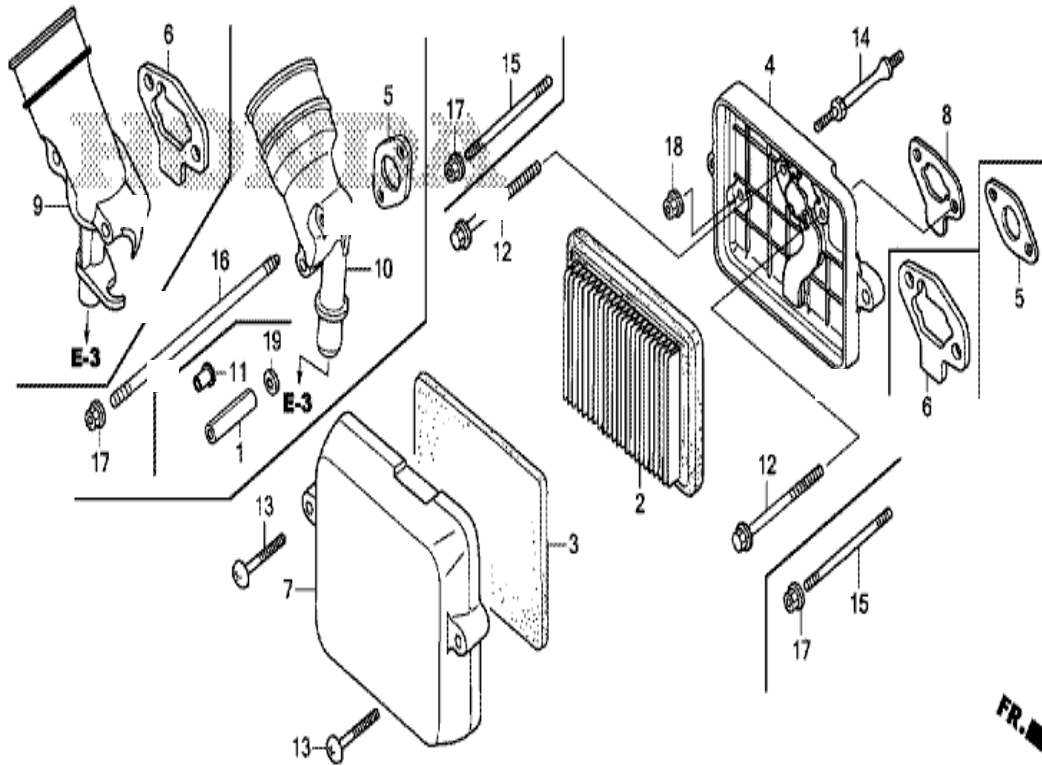


ZD00E2201

Refnr	Part Number	Description	from	to	Unit Qty.	Order Qty.	Repair Qty.
4	16500-ZG0-V90	CONTROL ASSY.			001	0	0
5	16550-Z0D-V21	ARM COMP., GOVERNOR			001	0	0
6	16555-Z0D-V20	ROD, GOVERNOR			001	0	0
7	16561-Z0D-V20	SPRING, GOVERNOR			001	0	0
8	16562-Z0D-V20	SPRING, THROTTLE RETURN			001	0	0
9	16594-883-010	HOLDER, WIRE			001	0	0
10	54717-ZG0-S00	BOLT, CABLE ADJUSTING (6X34)			001	0	0
11	90014-952-000	BOLT, FLANGE, 6X14 (CT200)			002	0	0
12	90015-Z5T-000	BOLT, GOVERNOR ARM			001	0	0
13	90605-230-000	CIRCLIP, 5MM			001	0	0
14	92301-05020-0A	BOLT, RECESSED, 5X20			001	0	0
15	93500-04006-0H	SCREW, PAN, 4X6			001	0	0
17	94001-05000-0S	NUT, HEX., 5MM			001	0	0
18	94002-06000-0S	NUT, HEX., 6MM			002	0	0
19	94050-06000	NUT, FLANGE, 6MM			001	0	0
20	16263-883-W10	JOINT, ROD			001	0	0



**GX100RT**  
**E-15 AIR CLEANER**

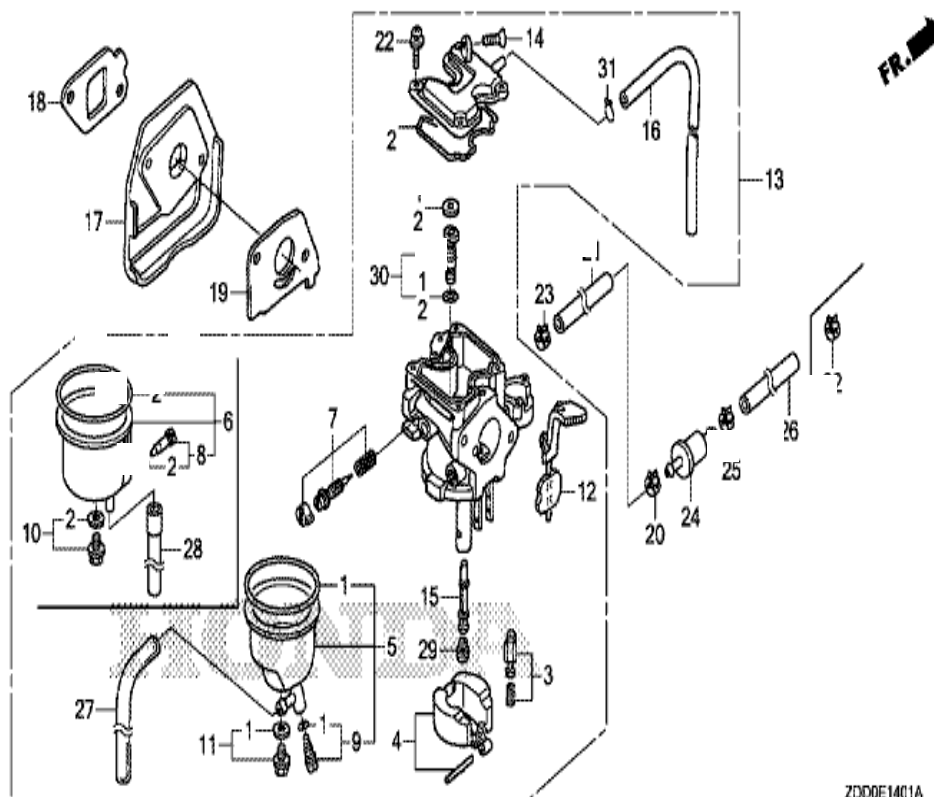


Z000E1500

Refnr	Part Number	Description	from	to	Unit Qty.	Order Qty.	Repair Qty.
2	17211-ZL8-023	ELEMENT, AIR CLEANER (TOYO ROKI)			001	0	0
3	17218-Z0D-000	FILTER, OUTER			001	0	0
4	17220-Z0D-V21	CASE COMP, AIR CLEANER		1106234	001	0	0
4	17220-Z0D-V22	CASE COMP, AIR CLEANER	1106235		001	0	0
6	17228-Z0D-V21	PACKING, AIR CLEANER			001	0	0
7	17231-Z0D-010	COVER, AIR CLEANER			001	0	0
13	90011-Z0D-000	BOLT, AIR CLEANER COVER			002	0	0
14	90041-Z0D-V20	BOLT, STUD			001	0	0
15	90042-Z0D-V20	BOLT, STUD, 5X75 (CT200)			002	0	0
17	94050-05000	NUT, FLANGE, 5MM			002	0	0
18	94050-06000	NUT, FLANGE, 6MM			001	0	0

## GX100RT

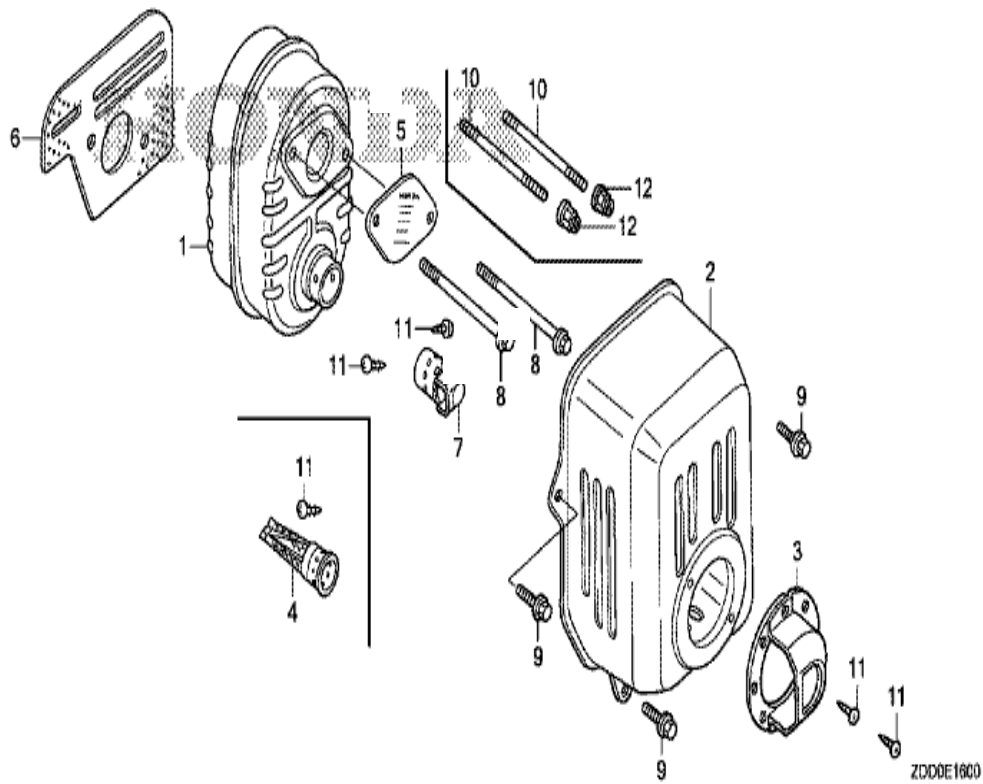
## E-14-1 CARBURETOR (RAMMER FLOAT)



ZDD0E1401A

Refnr	Part Number	Description	from	to	Unit Qty.	Order Qty.	Repair Qty.
1	16010-Z0D-V21	GASKET SET			001	0	0
3	16011-ZE0-005	VALVE SET, FLOAT			001	0	0
4	16013-ZG0-811	FLOAT SET			001	0	0
5	16015-Z0D-V21	CHAMBER SET, FLOAT			001	0	0
7	16016-Z0D-V21	SCREW SET			001	0	0
9	16024-ZB9-005	SCREW SET, DRAIN			001	0	0
11	16028-ZW6-611	SCREW SET			001	0	0
12	16044-Z0D-V21	LEVER SET, CHOKE			001	0	0
13	16100-Z4E-831	CARBURETOR ASSY. (BF33P A)			001	0	0
14	16124-ZE0-005	SCREW, THROTTLE STOP			001	0	0
15	16166-Z0D-003	NOZZLE, MAIN			001	0	0
16	16199-Z0D-V21	TUBE, AIR VENT			001	0	0
17	16211-Z0D-010	INSULATOR, CARBURETOR			001	0	0
18	16212-Z0D-V20	PACKING, INSULATOR			001	0	0
19	16221-ZG0-801	PACKING, CARBURETOR			001	0	0
22	93892-04012-18	SCREW-WASHER, 4X12			004	0	0
27	95003-05010-31	TUBE, VINYL, 3.5X6.5X100 (95003-05001-60M)			001	0	0
29	99101-ZG0-0550	JET, MAIN, #55			(1)	0	0
29	99101-ZG0-0580	JET, MAIN, #58			(1)	0	0
29	99101-ZG0-0600	JET, MAIN, #60			001	0	0
30	99204-ZE203-50	JET SET, PILOT, #35			001	0	0
31	95002-02089	CLIP, TUBE (B1 8)			001	0	0

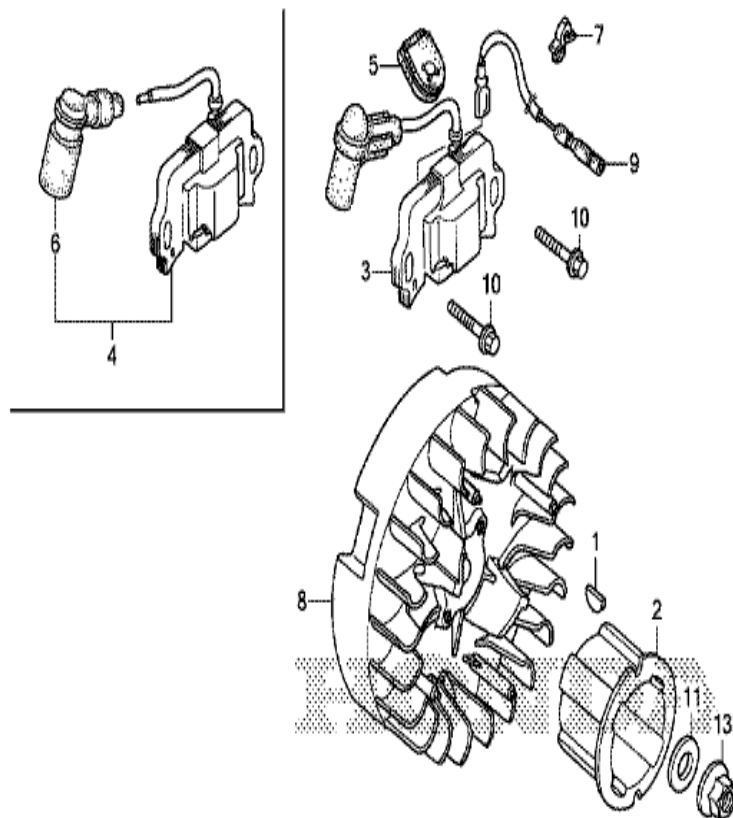
**GX100RT**  
**E-16 MUFFLER**



Refnr	Part Number	Description	from	to	Unit Qty.	Order Qty.	Repair Qty.
1	18310-Z0D-V20	MUFFLER COMP.			001	0	0
2	18321-Z0D-V22	PROTECTOR, MUFFLER			001	0	0
4	18350-ZL8-000	ARRESTER COMP., SPARK			(1)	0	0
6	18381-Z0D-000	GASKET, MUFFLER			001	0	0
9	90014-952-000	BOLT, FLANGE, 6X14 (CT200)			003	0	0
10	90048-Z0D-V00	BOLT, STUD, 6X78 (CT200)			002	0	0
11	90055-ZE1-000	SCREW, TAPPING, 4X6			(1)	0	0
12	90343-ZE6-000	NUT, SELF-LOCK, 6MM			002	0	0

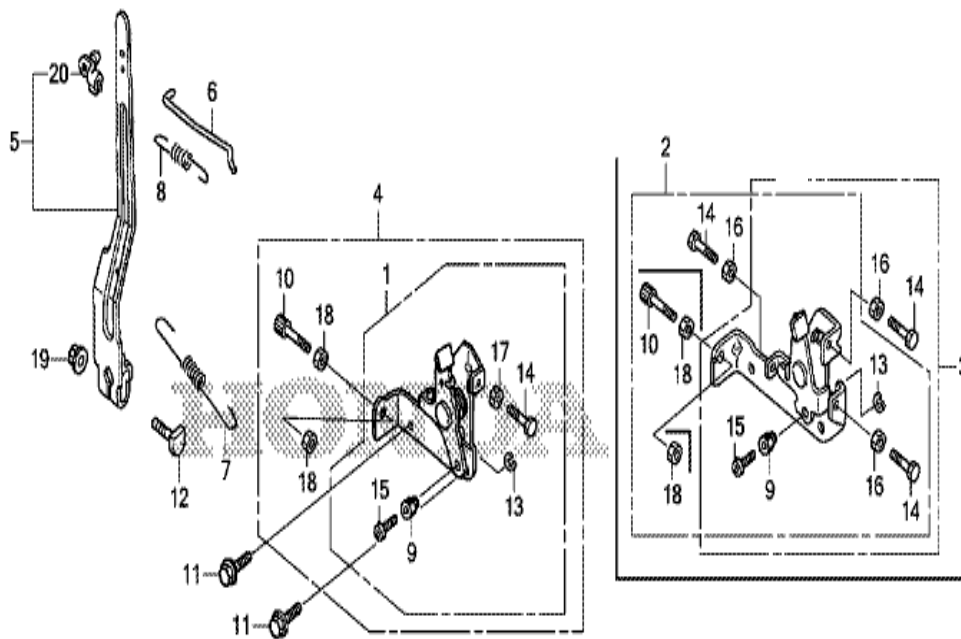
GX100RT

E-19 FLYWHEEL/IGNITION COIL (1)



Refnr	Part Number	Description	from	to	Unit Qty.	Order Qty.	Repair Qty.
1	13331-ZM7-000	KEY, SPECIAL			001	0	0
2	28451-Z0D-V03	PULLEY, STARTER			001	0	0
4	30500-Z0D-V02	COIL ASSY., IGNITION			001	0	0
5	30564-ZA5-000	GROMMET, CORD			001	0	0
6	30700-Z0D-V01	TERMINAL ASSY., HIGH TENSION			001	0	0
7	30701-883-000	CLIP, HIGH TENSION CORD (8MM)			001	0	0
8	31110-Z0D-003	FLYWHEEL COMP.			001	0	0
8	31110-ZDJ-003	FLYWHEEL COMP.			001	0	0
9	32195-Z0D-000	CORD, STOP SWITCH			001	0	0
10	90022-888-010	BOLT, FLANGE, 6X20 (CT200)			002	0	0
13	94050-12000	NUT, FLANGE, 12MM			001	0	0

**GX100RT**  
**E-22-1 CONTROL (2)**

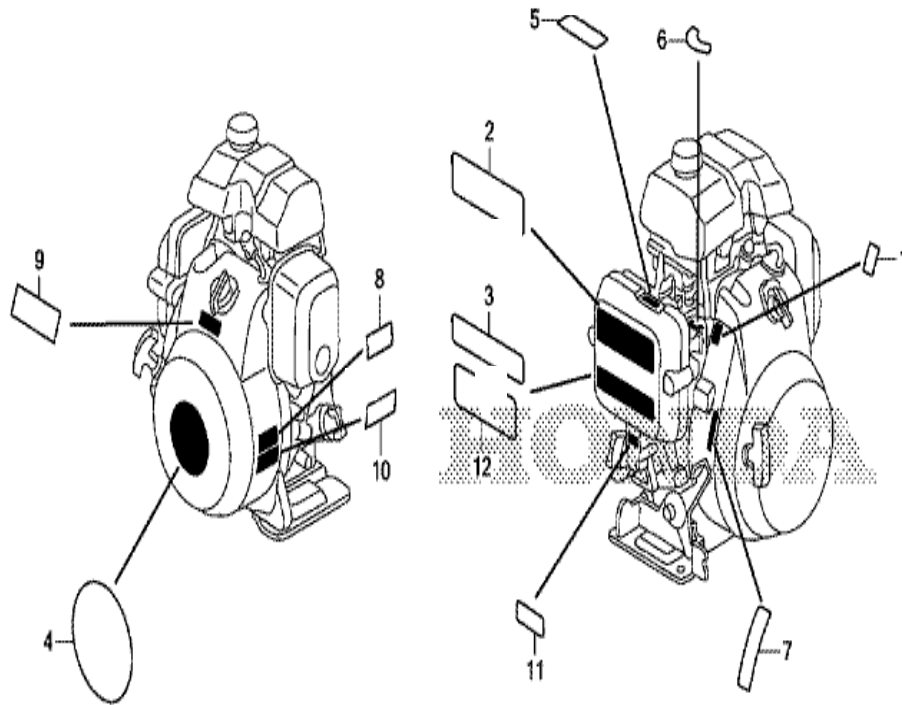


ZD00E2201

Refnr	Part Number	Description	from	to	Unit Qty.	Order Qty.	Repair Qty.
4	16500-ZG0-V90	CONTROL ASSY.			001	0	0
5	16550-Z0D-V21	ARM COMP., GOVERNOR			001	0	0
6	16555-Z0D-V20	ROD, GOVERNOR			001	0	0
7	16561-Z0D-V20	SPRING, GOVERNOR			001	0	0
8	16562-Z0D-V20	SPRING, THROTTLE RETURN			001	0	0
9	16594-883-010	HOLDER, WIRE			001	0	0
10	54717-ZG0-S00	BOLT, CABLE ADJUSTING (6X34)			001	0	0
11	90014-952-000	BOLT, FLANGE, 6X14 (CT200)			002	0	0
12	90015-Z5T-000	BOLT, GOVERNOR ARM			001	0	0
13	90605-230-000	CIRCLIP, 5MM			001	0	0
14	92301-05020-0A	BOLT, RECESSED, 5X20			001	0	0
15	93500-04006-0H	SCREW, PAN, 4X6			001	0	0
17	94001-05000-0S	NUT, HEX., 5MM			001	0	0
18	94002-06000-0S	NUT, HEX., 6MM			002	0	0
19	94050-06000	NUT, FLANGE, 6MM			001	0	0
20	16263-883-W10	JOINT, ROD			001	0	0

**GX100RT**

**E-28 LABEL**

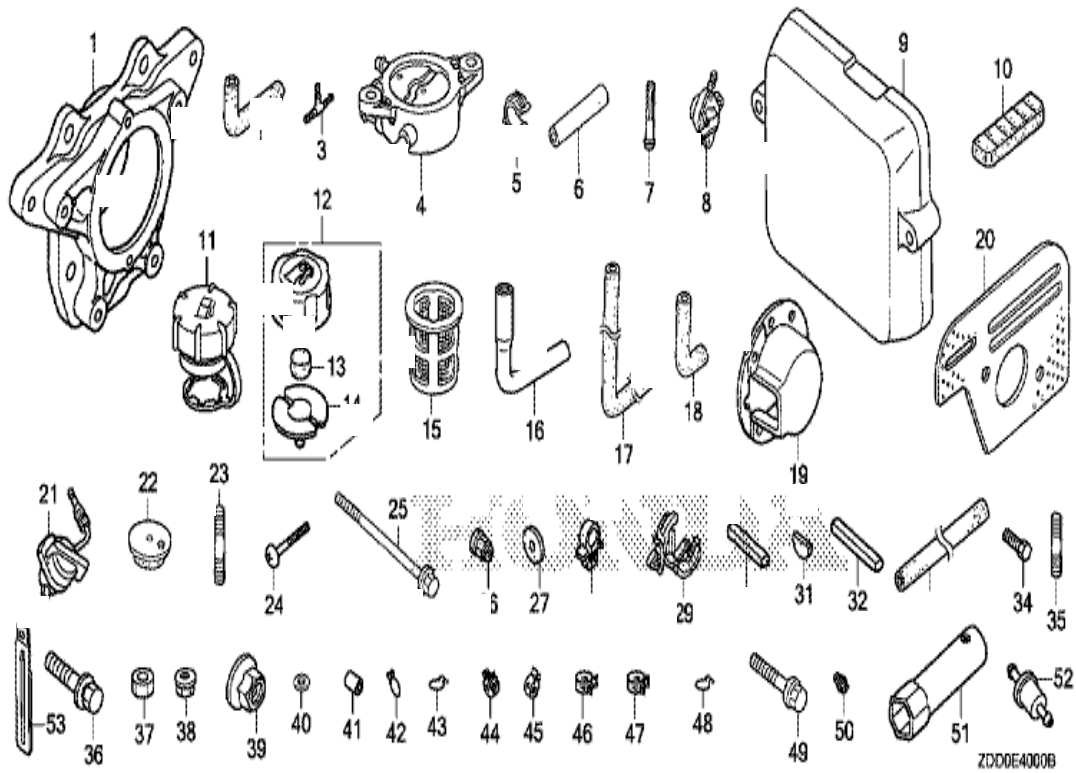


ZDD0E2800

Refnr	Part Number	Description	from	to	Unit Qty.	Order Qty.	Repair Qty.
2	87516-ZDD-000	MARK, OPERATOR CAUTION (ENGLISH)			001	0	0
4	87521-ZDD-P10	EMBLEM (GX100) (RAMMER)			001	0	0
9	87539-Z0J-000	MARK, EX. CAUTION (ENGLISH)			001	0	0
11	87601-Z0D-V40	MARK, TYPE (KRA2)			001	0	0

GX100RT

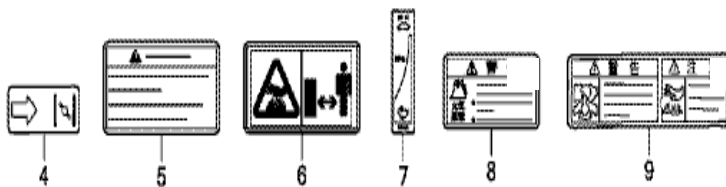
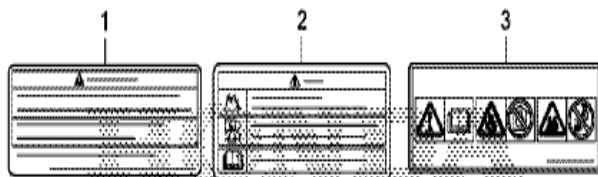
E-40 OTHER PARTS (1)



Refnr	Part Number	Description	from	to	Unit Qty.	Order Qty.	Repair Qty.
33	91434-Z4E-912	HOSE, FUEL, 4.2X400 (FKM)			001	0	0
35	92900-08025-0E	BOLT, STUD, 8X25			004	0	0
45	95002-40850-08	CLAMP, TUBE (D8.5)			002	0	0
51	89216-045-670	WRENCH, PLUG			001	0	0

GX100RT

E-40-1 OTHER PARTS (2)



ZDD0E4001A

Refnr	Part Number	Description	from	to	Unit Qty.	Order Qty.	Repair Qty.
1	87516-ZDD-800	MARK, OPERATOR CAUTION (FRENCH)			001	0	0
3	87519-ZDD-000	MARK, OPERATOR CAUTION (PICTOGRAPH)			001	0	0
4	87528-Z0D-000	MARK, CHOKE INDICATION			001	0	0
5	87539-Z0J-810	MARK, EX. CAUTION (FRENCH)			001	0	0
6	87539-Z0J-800	MARK, EX. CAUTION (PICTOGRAPH)			001	0	0
7	87532-Z4E-000	MARK, THROTTLE INDICATION			001	0	0